

Steps for Install

1. Prep the Site

To be fully prepared for a great installation, it's best to have a loader or skid steer, especially if dirt work is needed, and access to or the ability to dig fill dirt. You can use other equipment, but a loader or skid steer will make for the easiest install.

Begin by cleaning out the hole around the tank of mud, water, and slop. Then level the ground around the tank by scraping berms and higher areas where needed, filling low areas and holes with dirt. Pack as you go, adding more dirt where needed to create a level, packed surface. We use a skid steer with a bucket full of dirt for added weight to pack. Use caution to not hit the tank or the water lines around it.



2. Drainage

Ideally from the low side of the tank, scrape dirt to form a channel that will allow water to run away from the tank. We use a skid steer to dig a shallow ditch or channel. This will allow rainwater and any overflow from the tank to run off away from the pads and the water tank, reducing erosion over time. If tank is on a slight hillside, this step is not as important as natural drainage will occur.



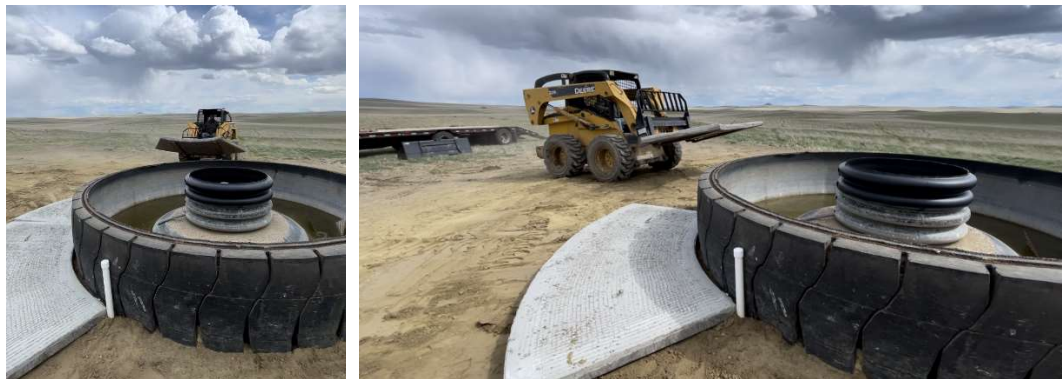
3. Pack + Final Prep

Finish by packing dirt level with the bottom of the tank or at whatever level that is desired. Spread a final layer of loose dirt or gravel on top of the packed dirt. Approximately 2 inches is sufficient. This will give a nice base for the concrete pads to settle into.



4. Install Stock Steps

Set pads into place using pallet forks or the built-in chain system.



Installation Demo Videos

Go to www.thestockstep.com for more information and demonstration installation videos!

360-degree Surrounds

For tire tanks particularly. Even if a tire tank is stated as a certain size of tire tank, tires vary widely in size – in both the diameter of the tank, as well as the outside edges, whether tread has been cut off the tire, etc. Therefore, the number of pads needed for a 360-degree surround will vary. Our 9' Stock Step pads fit on average 9-10' tire tanks with approximately 5 pads for a 360-degree surround. The 12' Stock Step pads fit on average 11-12' tire tanks with 5 to 6 pads for a full 360-degree surround.

On these full surrounds, keep in mind any pipes sticking up out of the ground that are part of the tank system. If present, start laying out the pads from there, beside the pipe. Lay pads from that point around the tank, ending back on the other side of the pipe. You can shave a corner off with a concrete saw for a tight fit, or just leave a bit of a gap there. Either is fine and will work great. See Step 4 in 'Steps for Install' in previous pages.

Open Spaces on a 360-degree Surround

Being that every tire size varies, it's most likely that you will have to "wing it" a bit on spacing the pads for the best fit. Some trial and error on the spacing will be needed to determine how many pads are needed, and how to space them.

We start by butting the pads up together around the tank. From there, see how much space is left over at the end and adjust. Options to address the open spaces are as follows:

- Space pads around the tank. Slightly adjust the layout and spacing of all the pads to leave relatively even gaps between each one. Fill the gaps with dirt or gravel (the pads will usually hold the dirt in place).
- Leave an empty spot. Although the customer may have a desire to have the pads go all the way around, leaving an empty spot works just fine. Cattle will naturally choose the areas with concrete steps over the empty spot to get a drink.
- Cut a piece. If you have access to a concrete saw, you can easily take some measurements and cut a piece off so that a tight 360-degree surround can be accomplished.
- Order a custom piece. If the customer would prefer not to have an empty spot or gaps between the pads, and cutting a pad is not an option, a custom piece can be ordered to fit the remaining space. Provide dimensions to their dealer for the open space, and we can add this custom piece to the next Stock Step order from their dealer.

Partial Surrounds

Partial surrounds are very common as access to a tank may be limited to a certain area (because of protection needed for a well, hydrant, solar panel, etc.). These are particularly easy installs as a 360-degree fit is not required.

Custom-Cut Pieces

We can take orders for custom cut pieces to specially fit a 360-degree surround, or other custom applications. Please provide dimensions and any pertinent details about the tank, setup, etc. and we will do our best to accommodate.

Hillside Installations

Installations of Stock Step pads along slight hillsides often work very well, and result in very little erosion as natural drainage keeps the waterer maintained.

Creative use of Stock Step installations on steeper hillsides area also possible. Here we have a Thermosink fountain on a hillside utilizing our Thermosink pads. We have placed a rectangular Stock Step pad below the Thermosink pads as an intermediate step up to the water to prevent additional erosion.

Erosion

Erosion around the outside edge of the concrete almost directly correlates to proper installation of the Stock Step pads and water tank. When good drainage is established in the tank area and due diligence has been given to prep the site with filling and packing around the tank, these things work together to greatly decrease the amount of erosion.

The Cobett Donut

We've designed the opening of the Cobett Waterer with a 3' opening to accommodate the waterer and to give enough space for easy install. We recommend filling in the gap between the pad and the tank with dirt. Although it is unlikely that a hoof could get in there, this fill would ensure that it does not.

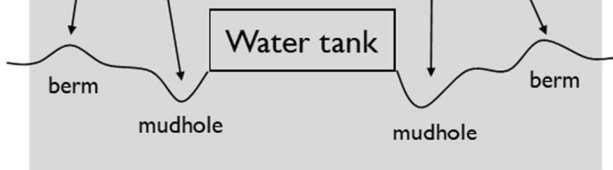
NRCS Pads

The NRCS pads are larger and heavier than our standard pads, designed to fit the government specs for livestock water tanks. Please use extra caution in handling these pieces as they are substantially heavier and more difficult to transport and maneuver. These pads have been approved by the South Dakota NRCS to fit with the CSP and EQUIP programs. Every project is different, but we understand that reimbursement on these pads may be up to 75%. Each producer must work with their local NRCS office to have their project containing these pads approved.

Photos!

We are growing a library of installation photos. Please take before and after photos and share with us if possible! We will get Stock Step hats / merch for anyone sharing their before and after photos! Text photos to Tommy at 605-949-1933 or email to thestockstep@gmail.com. Thank you!

BEFORE



STOCK STEP

AFTER



STEP #1



PREP: Clean out mudhole of mud, water, and slop. Scrape down berm and fill in mud hole, packing as you go. We use a skid steer to pack, driving back and forth with a scoop of dirt (for added weight), careful not to hit the tank.

STEP #2



DRAINAGE: Create drainage spot, preferably on the low side of tank. We use a skid steer to dig a shallow ditch. This is to allow the majority of rain water or, if the float breaks, overflowing water to drain away from the tank and Stock Step.

STEP #3



PACK: Pack dirt level with the bottom of the tank. Spread a layer of loose dirt or gravel on top of the packed dirt, approximately 2 inches is sufficient. Leave this dirt unpacked.

STEP #4



INSTALL: Set into place (utilizing the built-in chain system) with a loader and chains, pallet forks, the bale bed on your pickup, or a crane. We recommend filling in any large gaps between the pad and your waterer.

NOTE

Throughout this process it is very important that you avoid hitting your water tank. The Stock Step is a concrete product that has been designed to withstand use and transport; however, if mishandled, it can crack. Because of the internal reinforcement, a crack will not affect the function of the Stock Step and will still be fully functional.